



[HOME](#)  
[MAGAZINE](#)  
[JOKES](#)  
[GAMES](#)  
[YOUR PHOTOS](#)  
[OUTDOORS & GEAR](#)  
[HOBBIES & PROJECTS](#)  
[BL GYM](#)  
[VIDEO & AUDIO](#)  
[ABOUT SCOUTS](#)  
[BL STORE](#)

## Outdoors

# Taking Shelter

By Buck Tilton  
 Illustrations by Colin Hayes  
 From the February 2008 *Boys' Life* magazine

Being a “survivor” has captured the imagination of millions of TV watchers. But a survivor is much more than a TV fantasy. A survivor is someone prepared to live—and live as healthfully as possible—when life far from home doesn’t go exactly as planned. Being prepared to survive in the outdoors starts with knowing what to be prepared for. You can live days without water and weeks without food. People who don’t survive in the outdoors most often die from losing their body heat, not necessarily from starvation or dehydration. You need to be able to start a fire. And perhaps most importantly, you need to be able to build a shelter to stave off wind, rain and snow, and to keep your body heat trapped where it belongs: near your body. Here are the keys to taking shelter in the wilderness:

### DRESS WISELY

Your first line of defense against the elements is the “shelter” you choose to wear. If you wear layers of synthetic material or wool, and carry a shell of windproof, waterproof material, you are ready for anything. You’ll trap your body heat instead of expending it on the outside world.

### THE RIGHT SPOT

Choosing the best place to build a survival shelter is important. It should be in the driest spot you can find. Nothing sucks out body heat faster than wetness. If it isn’t too cold, build a shelter on high ground. Breezes will help keep the bugs away, and you’ll be easier to see if a search party passes nearby. If a cold wind is blowing, choose a spot sheltered by trees. But don’t build in the bottom of deep valleys or ravines where cold air settles at night.

### THE COCOON

If it’s almost dark and you can hurriedly collect dry debris (leaves, pine needles, bark) from the forest floor, make a pile two or three feet high and longer than you are tall. When you burrow into the pile, you are in a natural sleeping bag that protects against heat loss.



### THE FALLEN TREE

The simplest shelter is a fallen tree that has enough room under it for you to crawl in. Lean branches against the windward side of the tree (so the wind is blowing into it and not against it) to make a wall. Make the wall thick enough to keep out wind. If you can build a fire on the open side of your shelter, the heat will help keep you warm.



### THE LEAN-TO

If you find a fallen tree without enough room under it, or a rock or a small overhang, you can build a simple lean-to. Start by leaning fallen limbs against the object, such as the top edge of an overhang, to create a wall.



Lean the limbs at an angle to help shield rain. Cover the leaning limbs with leaves, boughs, pine needles, bark or whatever the forest offers. When you have built a thick wall, you can crawl underneath into your shelter. Remember to make your shelter no bigger than you need to fit you and anybody else with you. The bigger the space, the harder it is to keep warm.

You can also build a lean-to by placing one end of a long stick across a low limb of a tree and propping up the other end of the stick with two more sticks. Tie the ends of the sticks together with your boot laces or belt. Lean more sticks against the horizontal stick. Then pile leaves and other forest debris against the leaning sticks until you have a wall. Once again, a fire on the open side of the lean-to will add much heat to your “room.”

### THE A-FRAME

If you can't make a lean-to, you can make an A-frame shelter. You'll need two sticks four or five feet long and one stick 10 to 12 feet long. Prop the two shorter sticks up in the shape of the letter A. Prop the longer stick up at the top of the A. Tie the three sticks together where they meet. The three sticks will be in the shape of an A-frame tent with one end collapsed against the ground. Now prop up more sticks against the longer stick, and pile forest debris against the sticks until you have an insulated shelter open at the high end.



### A TARP

When you have a tarp, sheet of plastic or Space Blanket with you, and some rope or cord, tie a line between two trees. Tie it low to the ground with just enough room for you to lie beneath. Stretch the tarp over the line. Place large rocks or logs on the ends of the tarp to hold it in place with the edges close to the ground. If it's snowing, tie the line off higher on the trees. Steeper walls will shed snow better. Now you have an emergency tent.



### YOUR BED

Your shelter is not complete until you have made a bed to lie in. Dry leaves work well. Make your bed a little bigger than the space your body covers and at least eight inches thick. When you snuggle into it, you are ready for the unexpected night out.

### BAD PLACES TO BUILD A SHELTER

1. Anywhere the ground is damp.
2. On mountaintops and open ridges where you are exposed to cold wind.
3. In the bottom of narrow valleys where cold collects at night.
4. Ravines or washes where water runs when it rains.

» [E-mail this to a friend](#)

## Read 28 comments about “Taking Shelter”

Comment page: [3] [2](#) [1](#) »

1. 28 - *troop 41 man* says:  
[July 27th, 2008 at 6:43 pm](#)

I pult a lean to to finish my wilderness sunvile merit bage.also a pocketknife or a multytool [my favorite] canhelp you out a lot.

2. 27 - *SPL81* says:  
[July 23rd, 2008 at 1:55 pm](#)

I made one one time, by taking a skinny log and putting in the fork in a tree and the othe end laying on the ground. Then I leaned smallsticks against it. Then i covered it in moss.

3. 26 - *cheese burger* says:  
[May 20th, 2008 at 7:57 am](#)

I love the lean too!

4. 25 - *survivorman* says:  
[April 22nd, 2008 at 9:46 am](#)

hey I have a question what should you do (shelter wise) if there was thunder and litening and or hail? how would i take cover?

5. *24 - survivorman* says:  
[April 21st, 2008 at 5:12 pm](#)

nice love the artical

6. *23 - viper* says:  
[April 11th, 2008 at 11:26 pm](#)

I took a class on this type of stuff in high school. Big rocks make a fast shelter make sure if it's raining the water running down the rock has some were to go other then under you!! lean the wood against it to make a lean to. the best shelter is a fast one.. try to cover it with hemlock, pine branches, leaves, mud, dirt, grass, and even small sticks what ever is on hand at a moments notice. It's Imperative to stay dry in any life threatening wilderness emergence, do what ever is necessary to do so. small Fires help a lot.

7. *22 - M j 12* says:  
[April 8th, 2008 at 4:41 pm](#)

this was great now I know how to survive if I get lost in the woods

8. *21 - Lifescout* says:  
[March 31st, 2008 at 12:37 am](#)

this was a cool article i enjoyed the pictures something else i wanted to add when on a beach for a shelter run a trench pointing toward the ocean or else wind will blow right through (i experienced the 'wind tunnell effect before not pleasnt')

9. *20 - YamahaRider13* says:  
[March 29th, 2008 at 8:32 pm](#)

im going 2 make one of these tomorrow!

10. *19 - cman* says:  
[March 27th, 2008 at 4:24 pm](#)

i tried off a broken stranded car

Comment page: [\[3\]](#) [2](#) [1](#) »

## Write a comment about "Taking Shelter"

Nickname:  (Please do not use your real name)

### Type your comment:

Please be nice. Abusive comments or those containing offensive language, web links or e-mail addresses will not be approved.

Submit comment

## ASK THE GEAR GUY

### Send in your question for the Gear Guy

Not sure which gear to buy? Need tips for maintaining your equipment? Just send in your questions and check back here for the answers. Here are some of the Gear Guy's recent answers:

- [Compact first-aid kit](#)
- [Sharpening a pocketknife](#)
- [Carabiner's maximum weight](#)



- [Choosing a hunting knife](#)
- [Repairing a sleeping bag](#)
- [Buying a surfboard](#)
- [Avoiding mosquito attacks](#)
- [Mountain bike gears are wrong](#)
- [Contents of a bike emergency kit](#)
- [Best place to buy a bike](#)

>> [Click here for all the Gear Guy answers](#)

>> [Click here to submit a Gear Guy question](#)

## ULTIMATE GEAR GUIDE

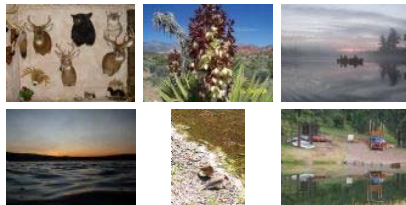
### Check our buyer's guide before you shop

Here's the lowdown on how to buy great stuff:

- [Backpacking stoves](#)
- [Backpacking tents](#)
- [Binoculars](#)
- [Daypacks](#)
- [Digital cameras](#)
- [First-aid kits](#)
- [Headlamps and flashlights](#)
- [Helmets](#)
- [Hydration systems](#)
- [Mountain bikes](#)
- [Pocketknives and multi-tools](#)
- [Running shoes](#)
- [Skateboards](#)
- [Sleeping bags](#)
- [Sunglasses](#)
- [Tents](#)
- [Two-way radios](#)
- [Watches](#)

## YOUR PHOTOS

### Post your outdoor and nature pictures



Have you taken a beautiful picture of a national park? Or maybe some great shots of wild animals? Boyslife.org wants to share them with the world.

>> [Click here to upload photos](#)

>> [Click here to see all the photos](#)

## VIDEO TUTORIAL

### Guide to sharpening tools or tying knots

Can't remember how to tie a bowline? Looking for an easy guide to sharpening your knife. Check out these videos.

>> [Learn to tie knots](#)

>> [Sharpen an ax or knife](#)



[Subscribe to Boys' Life](#)

[RSS feeds](#)

[Widgets](#)

[Contact us](#)

[How to advertise](#)

[Join Scouting](#)

[Privacy policy](#)

© 2008, Boy Scouts of America. All rights reserved.